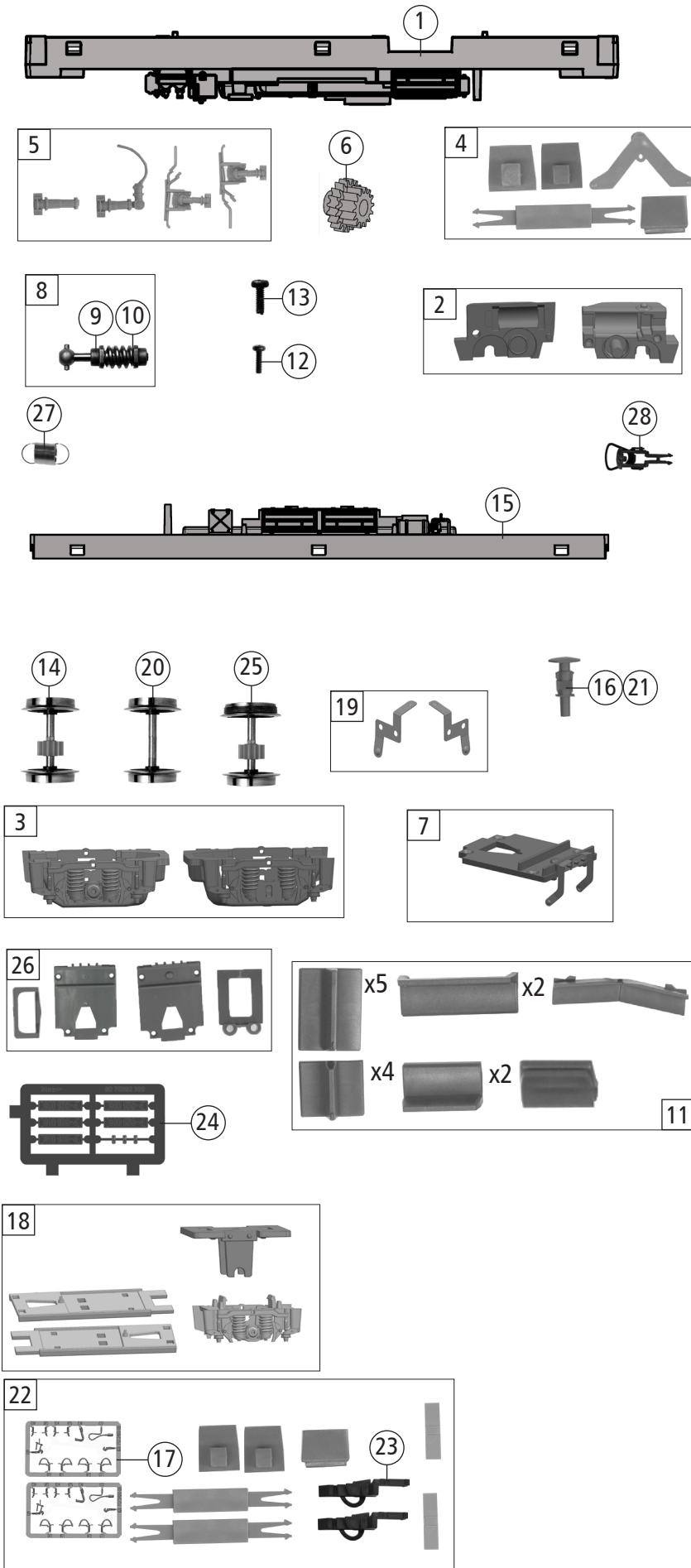


70382		SK-ZSSK Rh 810	=	
70383			=	🔊
Pos. Nr. Pos.no.	Beschreibung Description	Art.-Nr. Art.no.	Preisgruppe Price bracket	
1	Inneneinrichtung MW Interior fittings	145138	17	
2	E-Lokführer Loco-driver	126797	6	
3	TS - Sitze TW + BW Part set - Seats	145139	9	
4	Rahmendeckel MW+BW Frame cover	145377	8	
5	TS - Leitung, Kessel Part set - Lines,tank	145378	7	
6	Gehäuse MW kpl. Betr. nr. 810 159-4 Body complete Loco no. 810 159-4	145385	37	
7	Tritt Li+Re Treadle L+R	145143	6	
8	Gehäuse BW kpl. Betr. nr. 011 426-4 Body complete Loco no. 011 426-4	145395	36	
9	Platine analog MW PLUX-16 PCB analog	145149	18	
10	Platine Innenbel. TW/BW PCB interior lights	145150	18	
11	Brückenstecker TVS PLUX-16 Jumper	133241	10	
12	Motor KM Schwungm.+2 Kardansch. Motor with flywheel+2 cardan reception	145151	17	
13	Kardanschale Cardan reception	145383	4	
14	Pfeife Whistle	145389	5	
15	TS - Fenster MW/BW Part set - Windows	145386	18	
16	Lichtnagel Light pin	145155	3	
17	Scheibenwischer Li.+Re. Wipers L+R	145387	6	
18	TS - Griffe Part set - Handles	145388	9	
19	Inneneinrichtung BW Interior fittings	145160	8	
20	Platine analog BW PLUX-16 PCB analog	145164	18	
21	Brückenstecker PLUX-16 Jumper	129630	10	
22	M-Kontaktfeder D=2,3 L=9,9 mm Contact spring	116812	3	
23	TS - Lichtnagel Part set - Light pin	145173	6	
24	SK - Schraube M 1,6x4 mm SK - Screw	115161	3	
25	Kardanwelle L=20 mm Cardan shaft	100260	4	
26	TS - Griffe Part set - Handles	145396	9	
<b>Sound</b>				
27	Platine Onboarddecoder MW PCB	145170	43	
28	Lautsprecher Loudspeaker	129524	13	
29	Platine digit. BW PLUX-16 PCB digital	145171	13	
30	Decoder BW PLUX-16 Decoder	145172	41	

Änderungen in Konstruktion und Ausführung vorbehalten  
We reserve the right to change the construction and specification



70382		SK-ZSSK Rh 810	=	
70383			=	🔊
Pos. Nr. Pos.no.	Beschreibung Description	Art.-Nr. Art.no.	Preisgruppe Price bracket	
1	Grundrahmen MW Base frame	145376	18	
2	Getriebesatz 2tlg. Gear set 2 parts	145137	10	
3	DG-Blende 1+2 MW Bogie frame	145379	10	
4	TS - Deichsel Part set - Drawbar	145380	6	
5	TS - Zylinder Part set - Cilinder	145381	7	
6	Schnecken Zahnrad Z=19re./14ge. Worm gear	86416	4	
7	Radkontakt Li.+Re. Wheel contact L+R	145147	11	
8	Schneckensatz Worm gear set	145148	13	
9	Lager f. Schneckenachse Worm gear axle housing	89749	6	
10	Beilagscheibe 2,1x4 / 0,2 mm Washer	86108	3	
11	TS - Sitze Part set - Seats	145392	11	
12	SK - Schraube M 1,6x7 mm SK - Screw	116493	3	
13	GF - Schraube M 1,6x4 mm GF - Screw	114850	3	
14	Radsatz m.Zahnr. o.Haftr. Wheelset w.gearwh. w/o traction tyre	145384	11	
15	Grundrahmen BW Base frame	145391	12	
16	Puffer MW Buffer	145390	4	
17	TS-Bremsschläuche und Zughaken Part set brake tubes & coupling hooks	139832	7	
18	TS - DG-Blende BW Part set - Bogie frame	145393	10	
19	Radkontakt Li.+Re. BW Wheel contact L+R	145163	10	
20	Radsatz o.Zahnr. o.Haftr. BW Wheelset w/o gearwh. w/o traction tyre	145394	10	
21	Puffer BW Buffer	145397	5	
22	Zurüstbeutel Bag of accesories	145398	12	
23	Kurzkupplung Short coupling	115550	6	
24	Tafelsatz Set of panels	145399	12	
25	Radsatz m.Zahnr. m.1Haftr. Wheelset w.gearwh. w. 1 traction tyre	145400	12	
26	TS - Abdeckungen Part set - Covers	145382	7	
27	Zugfeder D=2,5 L=2,7/5,8 mm Draw spring	86208	3	
28	Standardkupplung Standard coupling	89246	6	